

Madison, Wisconsin

CITY OF MADISON

CITY ENGINEERING DIVISION

DEPARTMENT OF PUBLIC WORKS

PLAN OF PROPOSED IMPROVEMENT

INDEX OF SHEETS

SHEET NO. U1 UTILITY PLAN & PROFILES

ORCHARD STREET SANITARY SEWER REPAIR

CITY PROJECT NO. 12315

CONTRACT NO. 8877

PUBLIC IMPROVEMENT PROJECT APPROVED

MARCH 31, 2020

BY THE COMMON COUNCIL OF MADISON, WISCONSIN

PUBLIC IMPROVEMENT DESIGN APPROVED BY:

[Signature] 3/23/20

City Engineer

Date

SANITARY SEWER DESIGNED BY:



PLOT SCALE: 1 IN=1 FT_XREF

PLOT NAME: ---

REV. DATE: 3/11/2020 9:40 AM

ORIGINATOR: CITY OF MADISON

CONVENTIONAL SIGNS	
FIELD VERIFY ALL UTILITY LOCATIONS	
GAS	— G —
STORM SEWER	— ST —
SANITARY SEWER	— SAN —
WATER	— W —
BURIED ELECTRIC	— E —
OVERHEAD ELECTRIC	— OH —
POWER POLE	
ADA COMPLIANT RAMP W/ DETECTABLE WARNING FIELD	
COMBUSTIBLE FLUIDS	

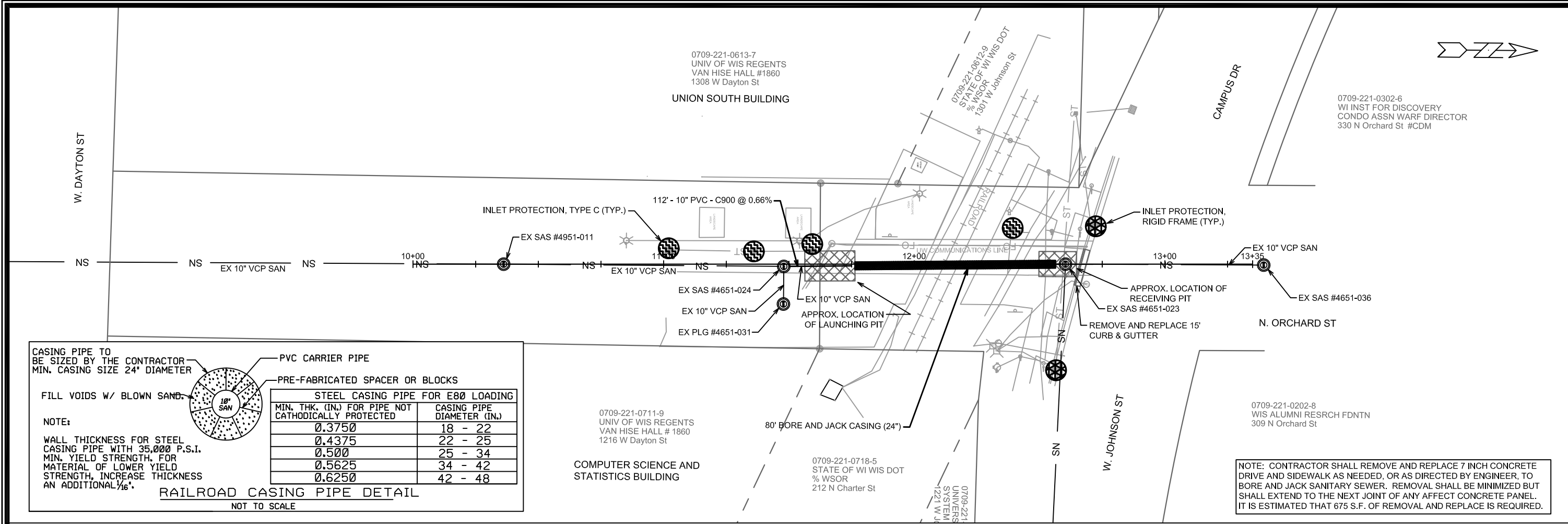


PROJECT LOCATION

NOTES:

ALL GUTTERS SHALL DRAIN WITH A MINIMUM GRADE OF 0.50% TOWARD STORM SEWER INLETS.

SIDEWALK RAMPS SHALL HAVE A MAXIMUM SLOPE OF 1" PER 12". SIDEWALK AND CURB RAMPS SHALL BE CONSTRUCTED WITH A SIDE SLOPE OF 2.00%. SIDEWALK SHALL HAVE A MINIMUM LONGITUDINAL SLOPE OF 0.50% AND A MAXIMUM LONGITUDINAL SLOPE OF 5.00% EXCEPT WHERE STREET GRADES EXCEED 5.00%.



RAILROAD CASING PIPE DETAIL
NOT TO SCALE

CASING PIPE TO BE SIZED BY THE CONTRACTOR
MIN. CASING SIZE 24" DIAMETER

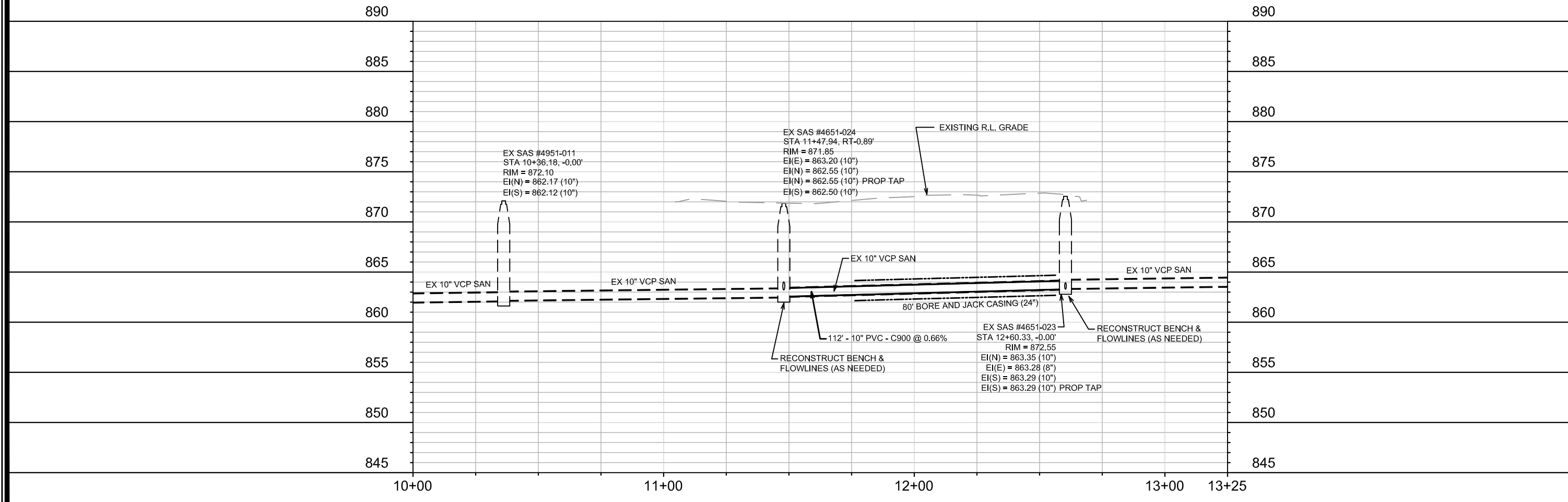
FILL VOIDS W/ BLOWN SAND.

NOTE:
WALL THICKNESS FOR STEEL CASING PIPE WITH 35,000 P.S.I. MIN. YIELD STRENGTH. FOR MATERIAL OF LOWER YIELD STRENGTH, INCREASE THICKNESS AN ADDITIONAL 1/16".

10" SAN

PVC CARRIER PIPE
PRE-FABRICATED SPACER OR BLOCKS

STEEL CASING PIPE FOR E80 LOADING	
MIN. THK. (IN.) FOR PIPE NOT CATHODICALLY PROTECTED	CASING PIPE DIAMETER (IN.)
0.3750	18 - 22
0.4375	22 - 25
0.5000	25 - 34
0.5625	34 - 42
0.6250	42 - 48



12315	MADISON, WI	8877
12315	ORCHARD STREET SANITARY SEWER REPAIR	CONTRACT NO:
U-1	UTILITY PLAN & PROFILE	U-1

0709-221-0613-7
UNIV OF WIS REGENTS
VAN HISE HALL #1860
1308 W Dayton St

0709-221-0302-6
WI INST FOR DISCOVERY
CONDO ASSN WARF DIRECTOR
330 N Orchard St #CDM

0709-221-0711-9
UNIV OF WIS REGENTS
VAN HISE HALL # 1860
1216 W Dayton St

0709-221-0718-5
STATE OF WI WIS DOT
% WSOR
212 N Charter St

0709-221-0202-8
WIS ALUMNI RESRCH FDNTN
309 N Orchard St

0709-221-0812-9
STATE OF WI WIS DOT
% WSOR
1301 W Johnson St

0709-221-1221 W J
UNIVERSITY SYSTEMS
1221 W J

0709-221-1221 W J
UNIVERSITY SYSTEMS
1221 W J

NOTE: CONTRACTOR SHALL REMOVE AND REPLACE 7 INCH CONCRETE DRIVE AND SIDEWALK AS NEEDED, OR AS DIRECTED BY ENGINEER, TO BORE AND JACK SANITARY SEWER. REMOVAL SHALL BE MINIMIZED BUT SHALL EXTEND TO THE NEXT JOINT OF ANY AFFECT CONCRETE PANEL. IT IS ESTIMATED THAT 675 S.F. OF REMOVAL AND REPLACE IS REQUIRED.

DATE: 3/20/2020 9:35 AM
REVISION: 12315
BY: U-1
SCALE: 1" = 40'

City of Madison Wisconsin logo

12315
U-1